

**BETHEL  
COMMUNITY  
OUTREACH  
MASAKA LTD**



**2025  
ANNUAL REPORT**

# ANNUAL REPORT FOR BETHEL COMMUNITY OUTREACH MASAKA LTD

**MISSION** “Touching Lives, Transforming Communities”

**VISION:** “Building Hope for community transformation.”

## Organization objectives

Provision of free education to orphans and vulnerable children in Greater Masaka region of Uganda.

Planting churches and support for local pastors.

Provision of clean water to rural communities that have not been accessed by National Water.

Providing counselling to people of all sorts of life especially those traumatized by various life circumstances like divorce, sickness, etc.

## Table of contents.

**Page.**

1. Communication from the country Director.....	3
2. Uganda Mission trips and Safari.....	3,4
3. Wells of Life projects and a map showing our scope of operation in Greater Masaka.....	5
4. Special appreciation from the village communities reached out in 2025.....	6-8
5. BCOM Centre days.....	9
6. BCOM Beneficiaries.....	9
7. BCOM kids Christmas dinner.....	10
8. Reports from local churches.....	10
9. Project School.....	11
10. Future projects and plans: Ongoing fundraising in Iowa for a water rig.....	11
11. 2025 Audited accounts.....	12-19
12. Official contacts.....	20

## COMMUNICATION FROM THE DIRECTOR



We give all glory and honor to God for the grace accorded to run our mission and call this year. Bethel Community Outreach has lived up to its mission of touching lives and transforming communities in Greater Masaka through the provision of education service at our project schools, helping local pastors as well as providing clean water to rural communities in Greater Masaka. This wouldn't have been possible without the support from our network of churches in Iowa, our local nonprofit at Pella, Iowa and in Northern Ireland. The year 2025 witnessed my three mission trips between Missouri, Iowa and Northern Ireland Respectively. Under these mission trips, I was able to put word out concerning our charitable work in Greater Masaka. Towards the end of my mission, we were able to raise four wells to bless our village communities as well as getting more than 13 children sponsors.

### UGANDA MISSION TRIPS 2025

This is one of the ways we encourage teams to come and volunteer at our projects in the communities.

#### Pastor Ken Loynachan and Nurse Erin.

It was in February that we hosted Pastor Ken and his daughter for a 10-day mission trip. Ken carried his usual evangelism effort while Erin conducted a medical camp at Manjeri village in Kyarulangira sub-county together with a team of local nurses in Masaka.

Over 250 people turned and were given free medical checkups, treatment and medication!



#### Minister Doug Terpstra Mission, May 2025

Mr. Terpstra is the current president of Bethel Community Outreach Uganda, our US-based nonprofit. This was his second trip to Uganda and had purposely come to ascertain BCOM scope of needs as well making a follow up of sponsored projects for a detailed report to the donors and friends at Open Bible Church in Pella.



*Doug & his two sponsored daughters*

*Doug at local Churches*

#### Pastor Andrew and Family Mission trip from Celebrate Church, Knoxville IA. June 2025

Celebrate Church has been supporting our nonprofit since 2018. The church supported over six community well projects in Masaka. The purpose of his visit was to supervise the previous Celebrate Church projects, launching Bukakkatta well in memory of Late Maureen (Mother to Lisa Willis). Over 3000 people have been touched through wells of life projects. Previous works done at Manjeri, Mwalo, Kasaka, Kasijjagirwa, Kitanda, Kisassa, Bukakkata etc.

The team also enjoyed a Safari at Lake Mburo and Queen Elizabeth National Park



Safari at Lake Mburo and Queen Elizabeth National Park

Wells of life and feed my lambs projects

Pr. Andrew Schmidt at Manjeri

## First Church Mission Trip July 2025

This team was led by Pastor Bob Johnson, the lead Pastor at First Church. First Church has been pivotal at supporting our community efforts in Masaka.

During this visit, several Pastors received brand new motorcycles to ease their mobility as they run their pastoral duties.



Team at Entebbe Airport, Equator (Kayabwe), Kazinga Channel & Queen Elizabeth National park

Batch of Motorcycles donated to some of our Pastors

## **WELLS OF LIFE PROJECTS.**

Various village communities were reached out to with the blessing of clean water

### **KISASSA WELL.**

Kisassa village with over 250 residents has never had any source of clean water except a communal pond that's stagnant. The blessing of the new well came as a result of our gospel outreach to this village through our local Pastor. Pastor Jane Nassiwa expressed the need for clean water and we felt the urge to touch this community. While visiting Eddyville Community Church in Iowa, the story for Kisassa touched Pastor Dan who decided together with their church to donate a well.





# BUKAKATA LOCAL COUNCIL 1

P.O BOX 996 MASAKA

Tel: 0700764515



Your Ref: .....

Our Ref: .....

THE DIRECTOR BETHEL COMMUNITY  
OUTREACH UGANDA

RE: APPRECIATION FOR BOREHOLE DONATION

In respect to the above, kindly receive my warmest appreciation and the people of Bukakata local council one, for the borehole donation to us.

We have over time suffered with unsafe water supply to the community given the intermittent supply from National water as the sole provider.

We are wholeheartedly grateful, we are surely amused beyond the notions of human speech.

May the almighty reward you abundantly for your good works of bringing hope to the needy.

I remain

Kadungole Emmanuel

LC1 chairperson Bukakata Village.



# KISASA L. C. 1

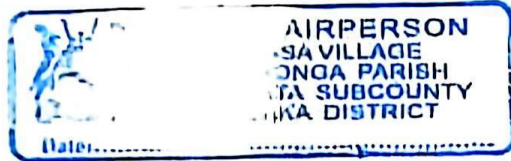
BUKAKATA SUB-COUNTY, BUKIBONGA PARISH, MASAKA DISTRICT

DATE: 11/04/2016.....

TEL: 0754 74 25 66

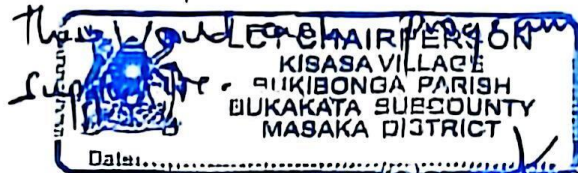
BETHEL COMMUNITY

OUTREACH  
UGANDA.



RE: APPRECIATION OF THE  
BORG HALL CONSTRUCTION.

We hereby write to your office through Musumba KAWA NYA appreciating the service rendered to the community of KISASA LC 1 with alot of thanks and we pray that if there is any other opportunity to the community, we request for electricity installation at our area because it affects so many of our businesses. As the chairman of Kisasa on behalf of my people, I'll send a vote of thanks to the ~~chairman~~ <sup>supervisor</sup> that have been



Your faithfully

Chairman - K. C. 1.



THE REPUBLIC OF UGANDA

**MASAKA DISTRICT LOCAL GOVERNMENT  
BUKAKATA SUB-COUNTY  
KABASESE A LC I**

Tel: +256-704293072

Office of the LC I Chairperson

Date: 09<sup>th</sup> April 2026

The Director Bethel Community

Outreach Uganda

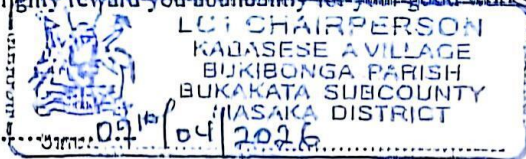
**RE: APPRECIATION FOR BOREHOLE DONATION**

In respect to the above, kindly receive my warmest appreciation and the people of Kabaseese and Kachanga resettlement camp to you for the borehole donation to us.

We have for over time suffered with unsafe water supply to the community given the Intermittent supply from National water as the sole provider.

We are wholeheartedly grateful, we are surely amused beyond the notions of human speech. May the Almighty reward you abundantly for your good works of bringing hope to the needy.

I remain



**MAYINJA FRANK**

**LC I CHAIRPERSON KABASESE A VILLAGE**

## BCO CENTRE DAYS

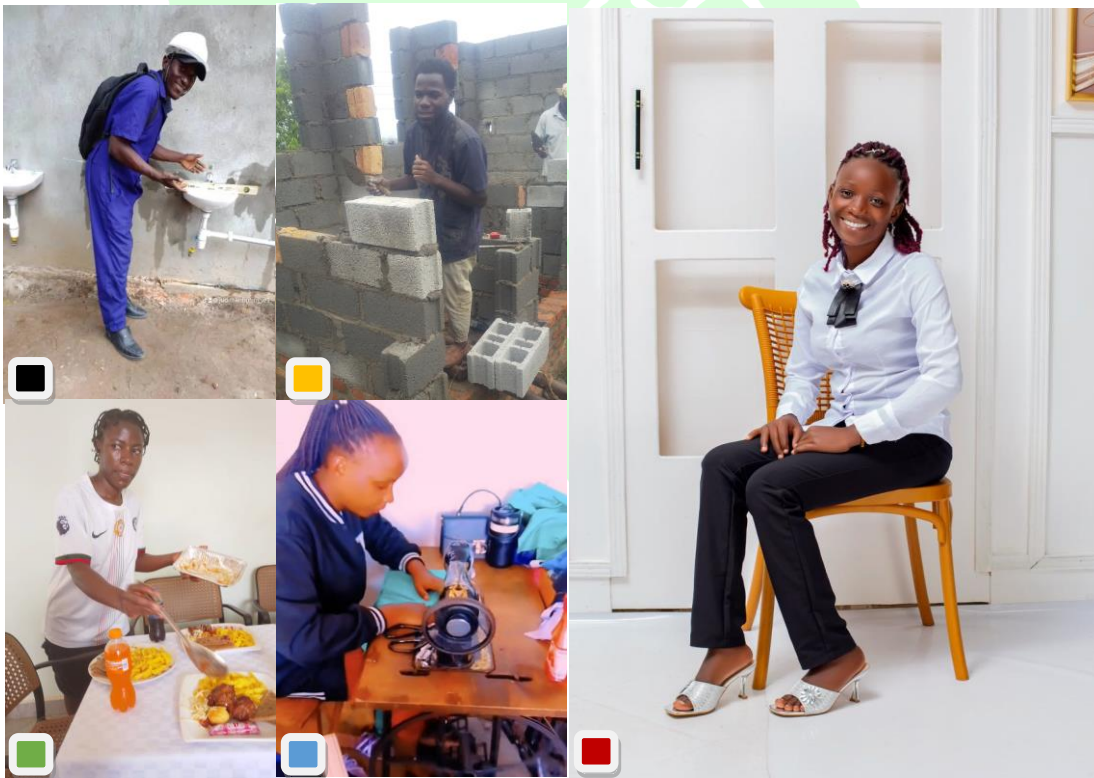
Bethel Community Outreach Masaka has adopted a discipleship program and skills empowerment for all project youths every Saturday of their holidays at Kasijjagirwa head office. Many have learnt skills in chalk making, farming and tailoring.



## BCO BENEFICIARIES FOR 2025

We are glad to be witnesses of our project children whom we took on as little kids years ago, and are now young adults. Under our child sponsorship program, when a child is through with "O"- Level of education, we opt for a technical or vocational education for the purpose of skilling.

These have recently qualified in various fields and are now working!



- Mr.Kayiira Deo (Plumber)
- Mr.Sseguya Joshua (Builder)
- Ms.Teddy Kikabunene (Caterer)

- Ms.Nassolo Joan (Seamstress)
- Ms.Nakanjako Tendo (Teacher)

## BCOM YEARLY KIDS CHRISTMAS DINNER.

This is an event that attracts hundreds of children around Kigamba, Kasubi, Kasijjagirwa and Kirumba communities. The event involves games, singing and dancing competitions and above all putting a smile on faces of little kids. Community transformation begins by touching lives of little children. We also remind them of the Savior born to save us from our sins. A generation raised without God would one day become a problem to the nation. As our school mission says: "Train up a child, in the way he should go..." our desire has always focused at raising children with a Christian mindset. 2025 event attracted over 400 children.



## BETHEL COMMUNITY CHURCH – PUTTI, BUTEBO DISTRICT

By the grace of God through Celebrate Community Church in Knoxville, Iowa, we were able to build a new church facility!



Old church structure



New church structure

Pastor Samuel Mpyangu has initiated two micro projects to help alleviate poverty among his flock. They have started a piggery project with a plan to distribute piglets to every church member. Members are told to take extra care of the animals and aren't allowed to sell them. The plan is to rear, once it gives birth, distribute piglets to another family etc. They have also started a tailoring venture, training women to acquire skills. Putti village is one of the poverty stricken villages in Butebo District of Uganda!



### PROJECT SCHOOLS.

The organization was able to construct two blocks for our Nursery School at Kasijjagirwa with the help of Celebrate Church and First Church in Pella. The school has an enrolment of 51 children with over six staff members!



Our Kindermaten at Kasijianirwa



Kids play center at Kasijianirwa

### Bethel Learning Centre Primary School.

This school has an enrolment of 230 needy children with 22 staff members



The new face of our Kirumba Campus



Kids play center at Kirumba campus

### FUTURE PROJECT PLANS

Bethel Community Outreach Masaka is intending to drill four more community wells in various village like Kaziru, Buzirango in Bukakkatta Sub-County and Kalunqu District.

### FUNDRAISING FOR A DRILLING RIG

Over the years we have faced challenge while drilling wells manually. Our diggers lack oxygen at lower depth, sometimes weak walls threaten to bury diggers, we have had to abandon certain sites when walls fall in, we encounter hard rock basements etc. While in Iowa, I expressed this challenge with several people and by the time I left Knoxville, one brother, Joe Cunningham felt a need to stand in the gap to raise funds to purchase a drilling rig. This project is expected to cost over \$100,000. For anyone desiring to help, you can contact Joe directly via his email address: [jcunning73@gmail.com](mailto:jcunning73@gmail.com)

**BETHEL COMMUNITY OUT REACH  
MINISTRIES - UGANDA.  
P.O. BOX 882,  
MASAKA.**

**AUDITED FINANCIAL STATEMENTS  
FOR THE PERIOD ENDING  
30TH JUNE, 2025.**

**KWIRI & ASSOCIATES**  
Certified Public Accountants

*Kwiri & Associates*



**KWIRI & ASSOCIATES**  
CERTIFIED PUBLIC ACCOUNTANTS  
PLOT NO. 4, HOBERT STREET,  
P.O. BOX 1982, MASAKA  
Tel: 0702 041 330  
0755 846 478  
0751 569 428  
Email: kwirilandaa@gmail.com

**REPORT OF THE INDEPENDENT AUDITORS  
TO THE BOARD OF DIRECTORS OF BETHEL COMMUNITY OUT REACH MINISTRIES- UGANDA.**

**INTRODUCTION:**

We have audited the financial statements set out on pages 2 - 4 which have been prepared on the basis of the standard accounting policies set. We obtained all the information and explanations that we considered necessary for our audit.

**Respective Responsibilities of the management and independent Auditors.**

The Ministry's Management is responsible for the preparation of the financial statements that show a true and fair view of the state of affairs of the Ministry and its operating results.

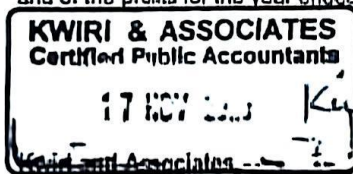
Our responsibility is express an independent opinion on the financial statements based on our audit and report our opinion to you.

**Basis of opinion.**

We conducted our audit in accordance with the International standards on auditing. We planned and performed our audit so as to obtain reasonable assurance that the financial statements are free from material misstatements. We examined on test basis evidence relevant to the amounts and disclosure in the financial statements. We also included assessments of significant estimates and judgements made by the management in the preparation of the accounts and whether the accounting policies are appropriate in the circumstances, consistently applied and adequately disclosed.

**Opinion.**

In our opinion, proper books of Account have been kept and the accounts, which are in agreement therewith, give a true and fair view of the state of affairs of the Ministry as at 30th June, 2025 and of the profits for the year ended on that date.



Certified Public Accountants.

P/1

**FINANCIAL POSITION  
 AS AT 30TH JUNE, 2025.**

	PAGES	JUNE 2025 (12 MONTHS) U.SHS	JUNE 2024 (12 MONTHS) U.SHS
Non - Current Assots	6	10,320,958	13,003,191
Current Assets	5	198,764	154,555
Current Liabilities	5	1,200,000	1,100,000
		<u>(1,003,236)</u>	<u>(945,445)</u>
		<u>9,317,722</u>	<u>12,057,746</u>
<b>Financed by:</b>			
Accumulated fund b/f		12,057,746	12,290,130
Surplus	3	<u>(2,740,024)</u>	<u>(232,384)</u>
		<u>9,317,722</u>	<u>12,057,746</u>

The financial statement on pages 2 to 4 were approved by management of Bethel Community Out Reach Ministries - Uganda and signed on its behalf by:-

**BETHEL COMMUNITY  
 OUTREACH** ★  
 ★ *Kawalya FAKA*  
 Mr Macgeorge O. Samuel  
 P.O. BOX 807 MASAKA  
 DIRECTOR.

**Bethel Community Oil Reach Ministries - Uganda**  
**Financial Statement**  
For the period ended 30th June, 2025.

**INCOME AND EXPENDITURE ACCOUNT**  
**FOR THE PERIOD ENDED 30TH JUNE, 2025.**

	JUNE 2025	
	(12 MONTHS)	
	U.SHS	
<b>Income:</b>		
Total Income	385,715,458	
<b>Loss Recurrent Expenditure:</b>		
Fuel Costs _ Supervision	1,400,000	
Stationery	2,885,000	
Legal Costs	449,181	
Water bills	700,000	
Electricity	136,683	
Internet / Airtime	44,000	
Designated costs	358,136,236	
Bank Charges	823,249	
Auditing Costs	1,200,000	
Provision for Depreciation	2,682,233	
<b>Total Recurrent Expenditure</b>	<b>368,455,482</b>	
<b>Surplus for the year</b>	<b>(2,740,024)</b>	-

- P/3

Bahfio Community Out Ranch Ministries - Uganda  
Financial Statement  
For the period ended 30th June, 2025.

**CASH FLOW STATEMENT  
FOR THE PERIOD ENDED 30TH JUNE, 2025.**

	<b>JUNE 2025</b>
	<b>U.SHS</b>
Surplus For the Period	(2,740,024)
Add Depreciation for the Period	<u>2,682,233</u>
	(57,791)
Changes in Creditors	<u>100,000</u>
	42,209
Changes in Debtors	<u>-</u>
	42,209
Less Acquisition of Non Current Assets	<u>-</u>
	42,209
Add Opening Cash Balance	<u>154,555</u>
	196,764
Changes in Stock	<u>-</u>
Closing Cash Balance	<u><u>196,764</u></u>

P/4

**Current Liabilities**

Name	Voto	Items	Amount
Auditing	Administration	Auditing	1,200,000
<b>Total Liabilities</b>			<b>1,200,000</b>
<b>Current Assets:</b>			
Cash and Bank Balances			198,764
			<b>198,764</b>

**A. INCOME:**

Income	365,667,828
Bank Interest Received	47,632
<b>Grand Total</b>	<b>365,715,458</b>

**B.**

<b>EXPENDITURE:</b>	<b>ACTUAL</b>
	<b>(12 MONTHS)</b>

Fuel Costs	1,400,000
Stationery	2,885,000
Legal Costs	449,181
Water bills	700,000
Electricity	135,583
Internet / Airtime	44,000
Designated costs	358,136,236
Bank Charges	823,249
Auditing Costs	1,200,000
Provision for Depreciation	2,682,233
	<b>368,455,482</b>

**VOTE 3**

<b>CREDITORS</b>	
Creditors	1,100,000
<b>Total Cash Payments</b>	<b>1,100,000</b>

**VOTE 5**

<b>CAPITAL DEVELOPMENT:</b>	
Equipments	-
<b>Total Cash Payments</b>	<b>-</b>
<b>Grand Total Expenditure</b>	<b>3,782,233</b>

**Schedule of Non - Current Assets:**

	<b>Buildings</b>	<b>Computers</b>	<b>Furniture / Fittings &amp; Equipment</b>	<b>Motor Vehicle</b>	<b>Totals</b>
Depreciation Rate	2%	40%	10%	20%	
Book value	-	5,465,000	-	14,400,000	19,865,000
Additions:	-	-	-	-	-
<b>Totals</b>	<b>-</b>	<b>5,465,000</b>	<b>-</b>	<b>14,400,000</b>	<b>19,865,000</b>
<b>Less provision for Depreciation:</b>					
Balance B/f	-	5,057,025	-	1,804,784	6,861,809
Current charge	-	163,190	-	2,519,043	2,682,233
<b>Total Provision for Depreciation</b>	<b>-</b>	<b>5,220,215</b>	<b>-</b>	<b>4,323,827</b>	<b>9,544,042</b>
<b>Net worth of Assets at 30.06.25</b>	<b>-</b>	<b>244,785</b>	<b>-</b>	<b>10,076,173</b>	<b>10,320,958</b>
<b>Net worth of Assets at 30.06.24</b>	<b>-</b>	<b>407,975</b>	<b>-</b>	<b>12,595,216</b>	<b>13,003,191</b>

**WEAR AND TEAR STATEMENT  
 FOR THE YEAR ENDED 30TH JUNE, 2025.**

	2025	
<b>Computers</b>		
W.D.V B/f	424,958	
Additions	-	
Less 40% wear and Tear	169,983	
W.D.V C/f	254,975	
<b>Motor Vehicle</b>		
W.D.V B/f	4,258,800	
Additions	-	
Loss 20% wear and Tear	851,760,00	
W.D.V C/f	3,407,040	
	<b>1,021,743</b>	

**INDUSTRIAL BUILDING ALLOWANCE**

Cost of the Building X Rate

-

**INCOME TAX COMPUTATION STATEMENT**

	2025
Surplus for the period	(2,740,024)
Add Depreciation	2,682,233
	<u>(57,791)</u>
Less Wear and Tear	1,021,743
	<u>(1,079,534)</u>
Less IBA	-
Less Loss B/f	-
	<u>(1,079,534)</u>
Tax (30%)	<u>(323,860)</u>

P/7

## **OFFICIAL CONTACTS**

### ***UGANDA:***

Bethel Community Outreach Masaka Ltd

P.O.BOX 882, Masaka.

Mob. +256-776-869559/+256 752 630150

### ***US CONTACTS:***

Bethel Community Outreach Uganda

935 Main Street Pella, IA. E-mail: [djterpstra@outlook.com](mailto:djterpstra@outlook.com)

+1 641 629 0000

### ***UNITED KINGDOM***

Mr. Robin McAleese

2Castlehill Close, Ballymoney, BT 53 6RP

+44 781220 223

